



JANOME

Artistic Software

Work Sheet 10

Daisy/Leaf and Floral Fill

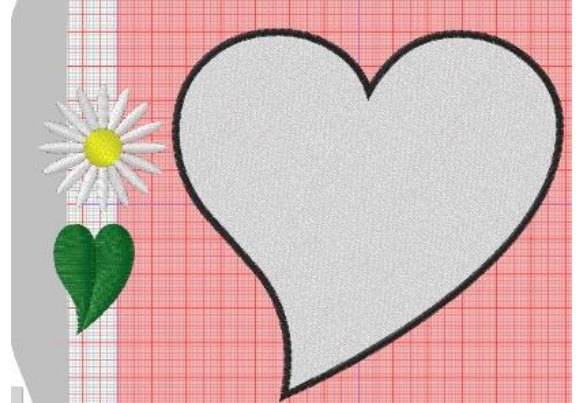
Open your Daisy design and your Leaf design, the two separate Files you have saved.

Again, we need to bring in the Heart as before and make it the size of your Hoop.

Delete the Border Outline and add a new one using "Autoborder", as in Worksheet 9.

You can change the outline colour now, or at the end if you want.

You should have all three designs now on your work page, as shown above Heart, Daisy and Leaf.



Next, select the Daisy and the Heart and make it a Floral Fill. We will cut out all the steps in previous worksheets as you can refer to them for reference.

Properties - Array, Floral Fill, Shape Fit Floral Vine, Reshape with the "Stitch Flow Tool" to show more or less flowers or to make your Daisy a different size. Try this several times until you are happy with the end result.



For the design below it was necessary to change the size of the Daisy to make it smaller, so the Heart looked to have more of the Daisy design in it.

To continue you will now need to delete the Single Daisy used for our Floral Fill as it is no longer needed.

Go ahead... get creative!

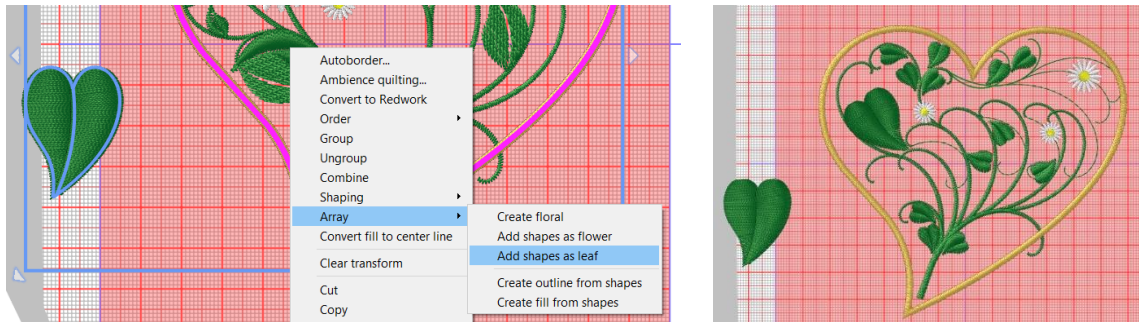
JANOME
janome.co.uk



Next, select “By Colour” White. Open your Colour Bar and Select Block Fill Green or any colour you wish to change the Branch colour to.

Now, we are going to finally use the New Leaf design we created.

Select both the Leaf and the Array Heart shape, Right click, Open the Menu as below.



Select “Add shapes as Leaf”. Click outside of your selected box and see what happens.

As in Worksheet 8 you can now separate Objects in the Properties tool bar. You can UNGROUP and EDIT NODES to bring the stem into the Heart shape.

You can get creative and make changes to your design.

Select the Heart.

Delete the Outline and change the Fill to Stipple in Properties. **Basically “BREAK THE RULES”**

Your design will now be filled with Stipple. Then Resequence into the correct colour order, mainly to show the Stipple on top of your Design which can look attractive. Alternatively, you can change the sewing order so that Stipple is the first section to sew on your machine so it will sit under your Floral Design.



Go ahead... get creative!

You could Copy and Paste a second Leaf.

Position the Leaf by your Daisy so the two Designs are under the Daisy and create this as your leaf Fill. The options are endless...

As you can see this added more flowers into the design.

Here are some more examples below.



The possibilities are endless, mix and match, come up with your own ideas or use any of the in-built Shapes. Create a Design, you can also find lots of images on the Internet.

Go ahead... get creative!