



# JANOME

## Artistic Software

### Work Sheet 19

#### Trim Tool

We are now at the stage where we understand that Artistic operates with Layers and will hide any of the underneath layers that are not going to be stitched.

This saves the user having to think that their machine is going to stitch multiple layers on top of each other and end up with an extremely thick Embroidery. This is not the case with Artistic.

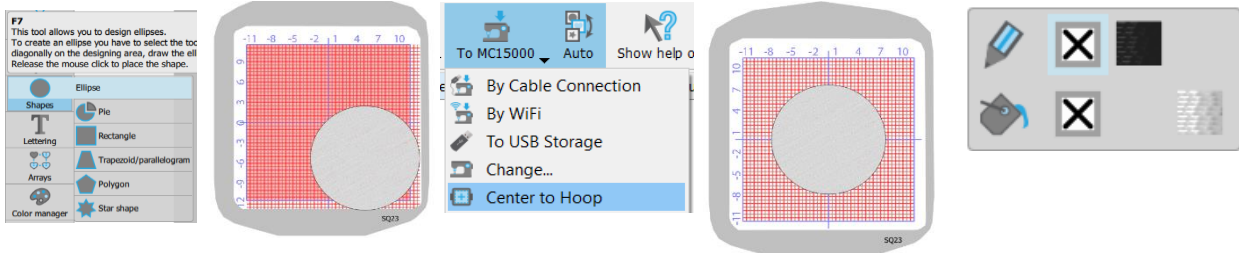
The Layers will only be hidden until you move any objects that are above the lower Layers.

The trim tool allows for under layers to be completely removed.

Select the Shape Tool and Ellipse. Draw a Precise Circle, this does not necessarily have to be precise however, by doing so makes it easier for the user to understand the exercise.

Centre your Design, Select the Object and Delete the Outline.

You can change the colours at the end of this process.



*Go ahead... get creative!*

**JANOME**  
janome.co.uk

Select your Circle, Copy and Paste giving you a second Circle. Once copied, it will be the same size as the previous Circle and directly on top, therefore it will not be visible at this stage.

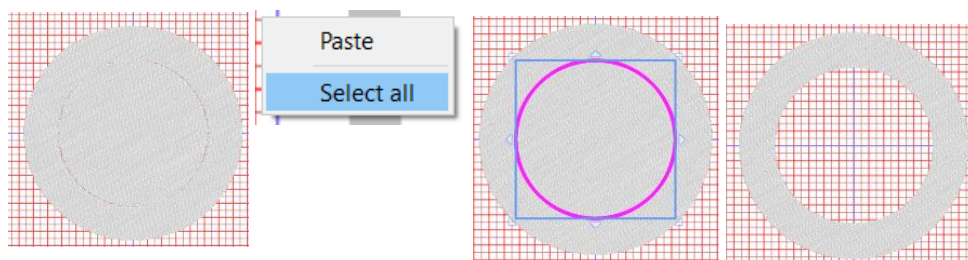
Select the Pasted Object and reduce the size, so it looks like a Tyre Wall.

Select Both Objects, Right Click "Select All"

Right Click a second time to open the Right Click Menu, Scroll down to "Shaping" and Across to "Trim"

Select the smaller centre Circle and Click "Delete" on your Keyboard.

The image process is shown Below. You will now have your Car Tyre Shape.

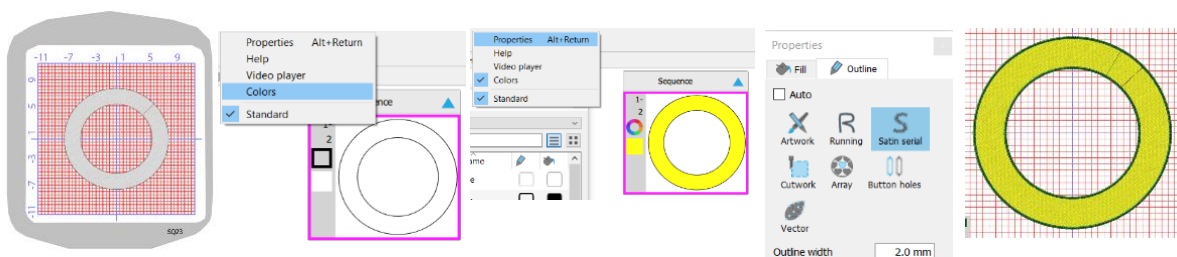


Now the Tyre has been designed, this is something that could be used for a Badge design.

Select your Object and Open "Colours" and change the colours to suit.

Right Click the Top Task Bar and Select "Properties" Change your Line Fill to "Satin", 2mm Wide. This will now give your Design an Outline.

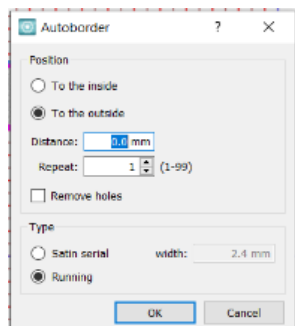
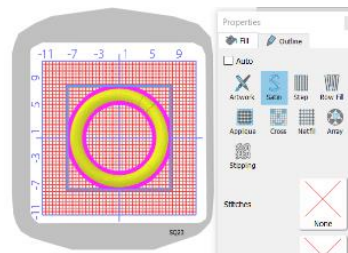
As per process below.



*Go ahead... get creative!*

Change your Fill to “Satin” in “Properties” Toolbox.

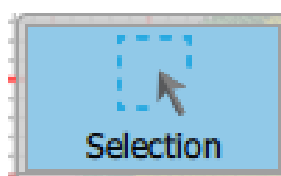
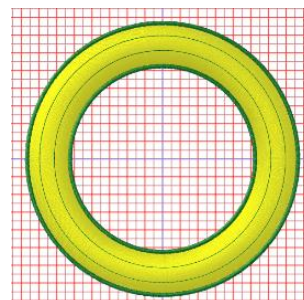
Satin Stitch can only be a max of 7mm long as it is a floating loose stitch, therefore we are going to create a “Split” in our Satin Stitch to secure it in position.



Next, Select the Object and Right Click “Autoborder” Set the parameters to Zero Distance.

We now need to Select the outlines, “Right Click” and Choose “Break Apart”

Next, select the inner Line stitch, Copy and Paste a first Line and Enlarge. Copy this Line and Paste again, making a Second Line and Enlarge. Try to balance your Lines across the width of the Satin Fill, as shown in the image.

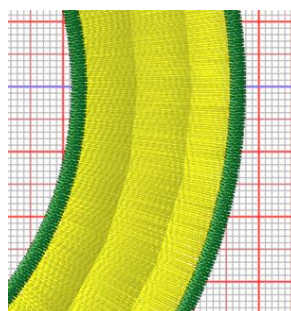
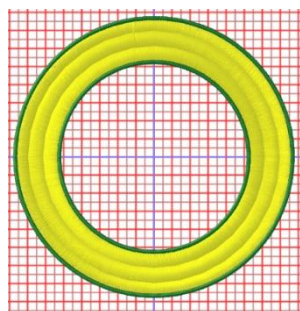


Select Both Lines and the Coloured Satin Fill.

To do this you can use the Control Button, with the “Selection” Tool highlighted.

Select the first Object, Hold Control and Select each Object in Turn.

In Properties select “Vector”, your Fill will now change to a “Split Satin”.



*Go ahead... get creative!*